



WHITSBURY VILLAGE SHOW

INCLUDING THE
SCARECROW COMPETITION

at

Whitsbury Village Hall

on

Saturday 4th August 2018



Doors will open to the public from 2:30pm

Admission 50p (Children free)

Cream Teas

Presentation of cups

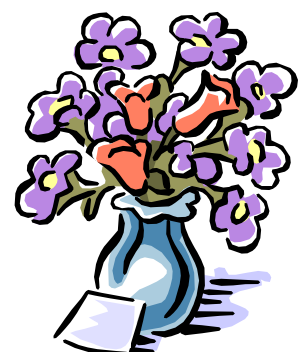
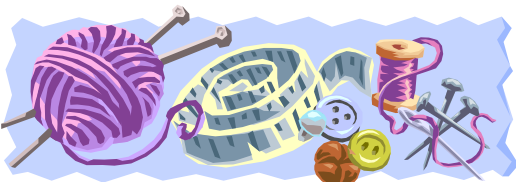
From 4:30pm



Schedules are also available on www.whitsbury.com



Whitsbury Village Hall



SHOW RULES

1. **THE SHOW IS FOR WHITSBURY RESIDENTS ONLY AND ALL CLASSES CAN BE ENTERED BY BOTH MEN AND WOMEN.**
2. **ENTRIES TO ALL CLASSES ARE FREE HOWEVER AN ENTRY FORM MUST BE COMPLETED. ENTRY FORMS MUST BE RETURNED AT THE LATEST BY 8 PM ON MONDAY 30th July TO STEVE HUSHER, AT 2 WELL HOUSE CLOSE.**
3. **ALL HORTICULTURAL EXHIBITS MUST BE GROWN BY THE EXHIBITOR.**
4. **ALL ENTRIES IN THE HANDICRAFT SECTION MUST BE THE BONAFIDE WORK OF THE EXHIBITOR AND NOT HAVE BEEN PREVIOUSLY ENTERED IN A WHITSBURY SHOW.**
5. **ONLY ONE ENTRY PER PERSON IN EACH CLASS.**
6. **VICTORIA SPONGE TO BE MADE WITH 3 EGGS, FILLED WITH RASPBERRY JAM AND HAVE CASTER SUGAR ON TOP.**
7. **APPLE CAKE: PLEASE USE THE FOLLOWING RECIPE FOR THE APPLE CAKE:**

8oz self raising flour, 6oz caster sugar, 4oz margarine, 3 eggs, 8oz chopped apple, 1oz demerara sugar, 1 level teaspoon mixed spice.

METHOD: Cream margarine and sugar. Add beaten eggs. Sift in flour. Add chopped apple and mixed spice. Put mixture into a greased and lined 7" or 8" round cake tin. Sprinkle with demerara sugar and bake at 170°C/325°F/Gas 3 for approximately 1 -1½ hours until cooked.
8. **ALL PRESERVES AND JAMS MUST HAVE A WAX DISC WITH CELLOPHANE COVER and must not be in commercial pots or with commercial lids (i.e. no names or labels).**
9. **CHUTNEYS MUST HAVE LIDS THAT ARE RUST FREE.**
10. **ALL ITEMS IN THE COOKERY SECTION MUST BE COVERED WITH CLING FILM.**
11. **PHOTOGRAPHS MUST BE MOUNTED ON PLAIN CARD (MAX SIZE 21x29.7cm, A4 size) BE UNFRAMED, NOT PREVIOUSLY ENTERED IN A WHITSBURY SHOW AND MUST HAVE BEEN TAKEN BY THE ENTRANT.**
12. **LIMERICKS ARE DEFINED AS A HUMOROUS 5 LINE VERSE. IN WHICH THE FIRST, SECOND AND FIFTH LINES RHYME WITH EACH OTHER AND THE 3rd AND 4TH LINES WHICH ARE SHORTER, FORM A RHYMED COUPLET.**
13. **CHILDREN MUST PUT THEIR AGES ON THEIR ENTRIES.**
14. **A VASE IS DEFINED AS HAVING ITS HEIGHT GREATER THAN ITS WIDTH.**
15. **WINNERS OF A BEGINNERS/NOVICE CATEGORY CANNOT RE-ENTER THAT CATEGORY.**
16. **EXHIBITS MUST BE IN THE HALL AND STAGED BY 9.45AM NO EXHIBITS WILL BE ACCEPTED AFTER THIS TIME. ALL EXHIBITORS MUST VACATE THE HALL BY 10AM FOR JUDGING TO COMMENCE.**
17. **THE JUDGES' DECISION IS FINAL.**

SHOW CLASSES

VEGETABLES AND FRUIT

1. COTTAGE GARDEN SELECTION - (an informal collection of at least two or more of the following groups; Vegetables, Flowers, Fruit, Herbs. To be displayed in a basket, within an area of 45x45cm. All items must be displayed within the basket and no part of any item to come out of it.)
2. POTATOES WHITE – 4
3. POTATOES COLOURED – 4
4. ONIONS – 3 (shown as grown with top on, cleaned but not skinned)
5. CARROTS – 4 (trim tops to 3” or less) must be firm
6. BEETROOT – 3
7. RUNNER BEANS – 5
8. DWARF BEANS – 5
9. COURGETTES – 3 – under 11” inclusive of flower
10. CUCUMBER – 2
11. TOMATOES – CHERRY - 6
12. TOMATOES – 4 (Less than 2” any type except Beefsteak, must be displayed with green top)
13. HEAVIEST POTATO
14. LONGEST BEAN – 1
15. 1 VASE OF 6 named FRESH HERBS
16. 3 OF ANY OTHER VEGETABLE NOT MENTIONED ABOVE
17. DISH OF SOFT FRUIT - (3 different kinds)
18. 3 OF ANY FRUIT (of the same kind)
19. AN AMUSINGLY SHAPED VEGETABLE OR FRUIT- to be judged on shape
20. 4 FRESH EGGS IN A BOWL

FLOWERS

- 42 VASE MIXED GARDEN FLOWERS – Mixed Perennials (no Roses)
- 43 VASE 6 ROSES (mixed or same variety)
- 44 SINGLE ROSE BLOOM – 1 SPECIMEN BLOOM
- 45 1 STEM CLUSTER FLOWER ROSE IN A VASE
- 46 VASE OF SWEET PEAS – 6 stems
- 47 3 SPRAYS OF FLOWERING SHRUBS, SHRUB OR CLIMBERS
- 48 DAHLIAS – 3 – any type
- 49 BOWL OF MIXED DAHLIAS
- 50 GLADIOLI – 1 SPECIMEN SPIKE
- 51 1 PELARGONIUM/GERANIUM – pot not to exceed 6”
- 53 CUT FOLIAGE – maximum of 5 mixed stems

COOKERY

- 70 1 – VICTORIA SPONGE (see rules)
- 71 1 – LEMON DRIZZLE CAKE (1 lb or 2 lb loaf tin)
- 72 1 – CHOCOLATE CAKE – filled and topped (To be judged on taste not decoration)
- 73 1 – APPLE CAKE – either 7 or 8 inch round (please use recipe in the rules)
- 74 1 – TREACLE TART – Latticed 8”
- 75 1 – SAVOURY FLAN / QUICHE
- 76 1 – LOAF BREAD – hand made or made with bread maker
- 77 4 – FRUIT SCONES
- 78 4 – GINGER BREAD – iced or non-iced
- 79 4 – CHEESE STRAWS
- 80 4 – PIECES OF SHORTBREAD
- 81 1 – POT JAM – any flavour
- 82 1 – POT MARMALADE
- 83 1– POT LEMON CURD specify date (must be no more than 3 weeks old)
- 84 1 – POT CHUTNEY

BOB WINGFIELD CHALLENGE CUP

THIS YEARS TOPIC

- 100 4 FLORENTINE BISCUITS

HANDICRAFT

- 105 ANY ARTICLE OF KNITTING
- 106 A SEWN ITEM (MAY INCLUDE PATCHWORK)
- 107 A TOY – ANY MEDIUM
- 108 A PAINTING IN ANY MEDIUM ON ANY SUBJECT
- 109 A GREETINGS CARD – ANY MEDIUM OR TECHNIQUE
- 110 A PIECE OF HANDMADE JEWELLRY
- 111 ANY ITEM OF CRAFT NOT LISTED ABOVE , eg embroidery, woodwork, etc

PHOTOGRAPHY (Rule 11)

MOUNTED ON CARD (max size 21x29.7cm, A4) AND UNFRAMED

- 120 AN AMUSING PHOTOGRAPH WITH A CAPTION
- 121 WHITSBURY – anything taken within the parish boundaries
- 122 WILDLIFE (Fauna and Flora but NOT pets, domesticated animals or garden flowers)
- 123 WATER (any image depicting water, water MUST be the major part of the image)
- 124 PEOPLE (1 or more, may be portraits)
- 125 OPEN – a photograph on any subject
- 126 PETS
- 127 NOVICE CLASS - any image taken by a novice

FLORAL ART

Exhibits are to be viewed and judged from the front.
No artificial plant material allowed; suitable accessories are allowed.

MAXIMUM SPACE
ALLOWED
WIDTH/DEPTH/HEIGHT

130	"TWISTED TANGLED AND TIED " A modern contemporary Exhibit	45cm x 45cm 18" x 18" height unrestricted
131	"ROYAL WEDDING " A table decoration, to be viewed from all sides	50cm x 50cm 20" x 20" height unrestricted
132	"MEMORIES " A MINIATURE EXHIBIT	25cm x 25cm x 25cm 10" x 10" x 10"

LIMERICK

- 140 When Prince Harry and Meghan tied the knot
141 Donald Trump has ranted another tweet
142 BREXIT arrangements are dividing the land

CHILDREN'S SECTION FOR UNDER 16 YEARS

ALL CHILDREN MUST PUT THEIR AGES ON CLASS TICKET

- 150 **IMAGINARY ANIMAL** – Made with **RECYCLABLE MATERIALS** e.g. loo roll holders, washing-up bottles, etc
151 **A DRAWING / PAINTING** any topic or subject
152 **A GARDEN IN A SEED TRAY**
153 **CHOCOLATE BROWNIE**
154 **CHILDRENS PHOTO** – any photograph taken by a child, maximum size 19 x 13 cm (7½ x 5 inches)

JUDGING

Cups are awarded on a points system:

- 3 points for 1st place, 2 points for 2nd place, 1 point for 3rd place

The Hutson Trophy will be awarded to the exhibitor who has the most points overall.

The John Wyatt Memorial Trophy will be awarded to the exhibitor of the Best in Show exhibit.

Please make sure that all cups are returned **at least 1 week** before the show to any committee member i.e. Steve & Elaine Husher, Debbie Beer, Graham Thompson, Vicki Shore, Heather Stott, Dave Bellini, Derek Mather or Jo Adams.

THANKS

We would like to thank the following judges:

Vegetables & Fruit and Flowers

Dave Manston

Cookery

Chrissy Thomas

Handicraft

Ann Hambly

Photography

Gerry Reid

Floral art

Eileen Witt

Limerick

Vicki Shore

Children

Jo Adams

WHITSBURY VILLAGE SHOW ENTRY FORM

Please complete the entry form with class numbers in which you wish to compete and return to Steve Husher at 2 Well House Close, by **8 pm** **on Monday 30th July 2018.**

Please ensure that you have read the show rules before entering.

Please bring your exhibits to the Village Hall on Saturday 4th August for staging between 8.00am and 9.45am. No exhibits will be accepted after this time. Judging will commence at 10.00am and all exhibitors must be out of the Hall by then. The Hall will re-open at 2.30pm.

Presentation of cups from 4.30 pm

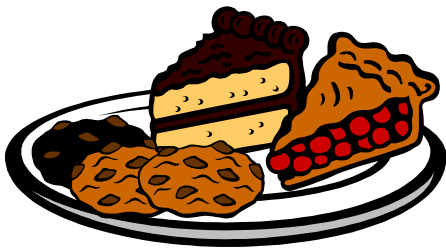
_____	_____	_____	_____	_____
_____	_____	_____	_____	_____
_____	_____	_____	_____	_____
_____	_____	_____	_____	_____
_____	_____	_____	_____	_____

Name:

Age if Child
Entrant

Address:

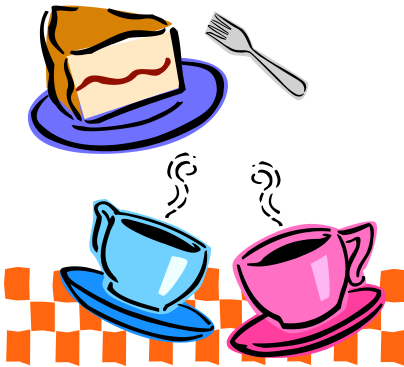
Entrance fee is free to all entrants following a kind donation by Dave Bellini



CLOTTED CREAM

TEAS

from 3.00pm



Check out

www.whitsbury.com

our very own village website

DON'T FORGET

SCARECROW COMPETITION

1. Scarecrows may be made out of anything. All styles of scarecrow are welcome, traditional, or representations of characters, local, national or fictional.
2. One scarecrow per person is allowed, e.g. a household of 2 adults and 2 children can have 4 scarecrows.
3. Make a Scarecrow, dress it in old clothing and hang, tie, mount or otherwise display it on or around your house or premises for people to see. It needs to be visible from the road for people to view and admire it!
4. Scarecrows must be displayed from **21st July** at the latest and be displayed until after the Village Show on **4TH August**. (Sending the scruffiest member of the family to stand in the garden is not allowed).
5. Entries: FREE, please send a note/email to **Steve Husher**, at **2 Well House Close**, by midnight **21st July** to enter your scarecrow giving the maker's name(s), the maker's age(s) if under 16, the name/title of the scarecrow and the location where it is on display. Any questions call Steve on 518372 or email steve@husher.co.uk.
6. A "secret judge" will tour all the scarecrows between July 21st and August 3rd.
7. Prizes will be awarded for the top three scarecrows.